

Fully Automated Magtration System 8Lx for Genomic DNA Purification from Whole Blood



● Performance of genomic DNA purification from whole blood

Table 1. Materials and Reagents

Reagent	MagDEA DNA 7000 Blood (8Lx) (Code No. E7002)
Protocol	MagDEA DNA 7000 Blood 8Lx ver.1.1
Sample	human whole blood treated with EDTA-2Na
Sample Volume	7 ml
Elution Volume	1 ml
Operation Time	Approx. 70 min.

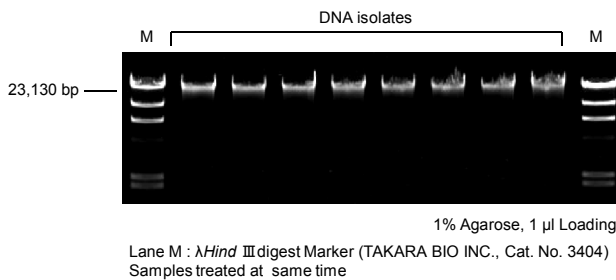


Figure 1.
Agarose gel electrophoresis of purified genomic DNA from whole blood by Magtration System 8Lx

Table 2. Yield and Purity (n=8)

Sample	Yield (µg)	A ₂₆₀ /A ₂₈₀
human whole blood treated with EDTA-2Na	174.1 ± 3.8	2.06 ± 0.02

● Performance of genomic DNA purification from whole blood with the different types of anticoagulant

Table 3. Material

Sample	human whole blood treated with EDTA-2Na, Heparin, ACD
--------	-------------------------------------------------------

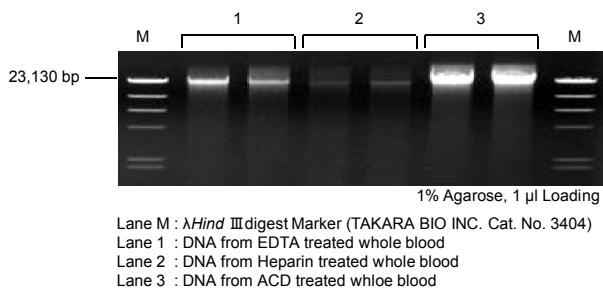
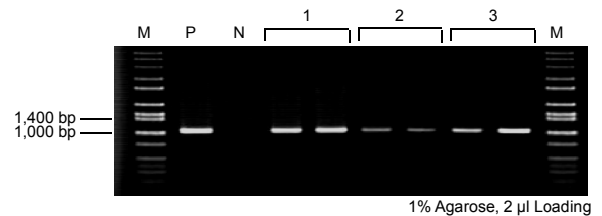


Figure 2.
Agarose gel electrophoresis of purified DNA from whole blood with the different types of anticoagulant

● PCR amplification using DNA purified from whole blood by Magtration System 8Lx

Table 4. Condition of PCR amplification

Template	50 ng	PCR Cycle
Primer Target	Benzodiazepine (BZD) receptor (located on GABA receptor) 1038 bp	Preheat 94°C, 5 min. ↓ Repeat 94°C, 20 sec. ↓ 57°C, 30 sec. ↓ 72°C, 1 min. 30 cycles ↓ Extension 72°C, 10 min.
Enzyme	TaKaRa Ex Taq	



Lane M : Wide-Range DNA Ladder Marker (TAKARA BIO INC. Cat. No. 3415A)
Lane P : Positive control
Lane N : Negative control
Lane 1 : DNA from EDTA treated whole blood
Lane 2 : DNA from Heparin treated whole blood
Lane 3 : DNA from ACD treated whole blood

Figure 3.
Agarose gel electrophoresis of purified DNA from whole blood with the different types of anticoagulant

Advantages

The Magtration System 8Lx would be one of the most reliable genomic DNA purification system for large volume sample in the current market.

The genomic DNA purified by Magtration System 8Lx is sufficient yield and purity to use in downstream studies directly, such as PCR and restriction enzyme digestion.

The Magtration System 8Lx is true walk-away automation system.

[Call center for product or technology]

Asia Region

Precision System Science Co., Ltd.
88 Kamihongou
Matsudo-shi, Chiba 271-0064, Japan
Tel : +81-47-303-4801
Fax : +81-47-303-4811
Tech-support@pss.co.jp
URL: http://www.pss.co.jp



United States

Precision System Science
USA, Inc.
contact@pssbio.com
URL: http://www.pssbio.com



European Region

Precision System Science
Europe GmbH
contact@pss-europe.de
URL : http://www.pss-europe.de

